

Tithe Farm Primary School SEND Newsletter



Spring Term 2024

Dear Families,

Welcome to our first edition of our SEND newsletter. Each term, we will update you with various information relating to SEND at Tithe Farm, including interventions, external agencies available for support and activities running during the holidays.

It has been a busy start to the new academic year, with children settling back into their class routines.

We appreciate your support and would like to provide opportunities for you to provide families voice. We will be sending out a questionnaire to gather your views and suggestion after half term. We do hold SEND coffee mornings and we have held drop ins over the last term, please read the weekly newsletters for any up and coming events.

Interventions

As part of our assessment processes, teachers identify pupils who require further support with specific areas of their learning. From there, we will then use further diagnostic assessments to identify specific areas of need. Not all pupils are SEND but need an additional boost for a short term to support their learning.

We use this information to design interventions which are delivered and monitored over a specific period. At the end of the period, we will further assess to show progress towards the identified area of need.

Parents Evening

You will soon receive an invite to our SEND Parent's evening which is taking place on Tuesday 12th March. Teachers will discuss your child/ren's SEND Support Plan or Provision Map with you, talking about their targets, progress and next steps. This is your time, as families, to coproduce and update any relevant information and make changes to the SEND Support Plan. You will be asked to sign a communication slip and teachers will share the agreed support plan via google drive. If you prefer a paper copy, please ask the teacher and this can be provided for you.

Communication

Please be aware that Mrs Maloney works part-time and has a class responsibility for one and a half days a week and Mrs Ryan has multiple roles within the school. Due to this, the SEND department will aim to respond within 2 working days of any correspondence (staffing dependent).

Coffee Afternoon

There will be a SEND Coffee Afternoon at 2:45pm on Tuesday 19th March.



Tithe Farm Primary School SEND Newsletter

Spring Term 2024



Identification of SEND

To support our families in understanding how SEND pupils are identified, we are sharing our pathway which is used in school by our staff.

The pathway is designed in line with the Code of Practice 2014 where identification of SEND follows the Assess → Plan → Do → Review structure and the Graduated Approach outlined by Central Bedfordshire.

This document is available on the **school website** within the SEND tab.

Social, Emotional and Mental Health Pathway

Alongside our SEND pathway, we have developed a mental health and well-being pathway for children who have anxiety, trauma and any other life-changing situations which effect their social, emotional and mental health. This document is available on the **school website** under the Mental Health and Well-being tab.

Graduated Approach

The SNAP Parent Carer Forum are running an online workshop for families to understand how parents/schools and external agencies should work together to support children and young people in Central Bedfordshire.

Book your place online for the session taking place on 14/02/24 at 9:30am.

Holiday Support

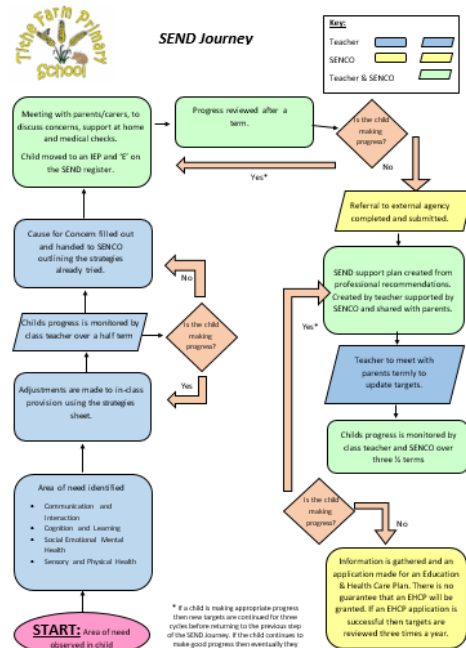
<https://www.kidsinaction.org.uk/>

<https://www.autismbedfordshire.net/>

<https://www.snakes-and-ladders.co.uk/our-softplay/send-play-sessions/>

<https://localoffer.centralbedfordshire.gov.uk/kb5/centralbedfordshire/directory/localoffer.page?localofferchannel=5>

From the SEND Team



Join us online to find out about ...

The Graduated Approach

Better understand the SEND process in Central Bedfordshire

Book your place
Online 14/02/24 9:30 am - 10:30am

Central Bedfordshire Council and SNAP PCF have worked together to co-produce new training and a guide for parents/carers to better understand how parents/schools and external agencies should work together, to ensure a programme of early intervention is delivered to support children and young people in Central Bedfordshire.

Join us with a coffee and find out what this means for your child and have your questions answered at our free online event.

PLEASE NOTE CHANGE: THIS IS NOW ONLINE ONLY:

Online

ONLINE 14TH FEBRUARY AT 9.30 AM TO 10:30AM

Please email stating, 'The Graduated Approach' 14/02/24 online, with your name to:
admin@snappcf.org.uk

You will need to be a member of SNAP PCF which is free and quick to join.

Please look at our website www.snappcf.org.uk and our social media www.facebook.com/snappcf.org.uk

What you will learn:

- Understand how schools provide High Quality Teaching?
- Understand the four broad areas of need: Communication and Interaction, Cognition and Learning, Social, Emotional and Mental Health, Sensory and/or Physical Needs.
- What SEND is, as defined by law.
- Understand what SEND Support means.
- Find out what a SEND Support Plan looks like.
- Understand how SMART Targets can help your child.
- When should an Education Health Care Needs Assessment be applied for?