

Knowledge Organiser

WHAT I SHOULD ALREADY KNOW

- I know a range of common wild and garden plants.
- I can identify what a deciduous and evergreen tree is.
- I can identify names of different parts of the plants and trees.
- I can explain where a plant comes from.

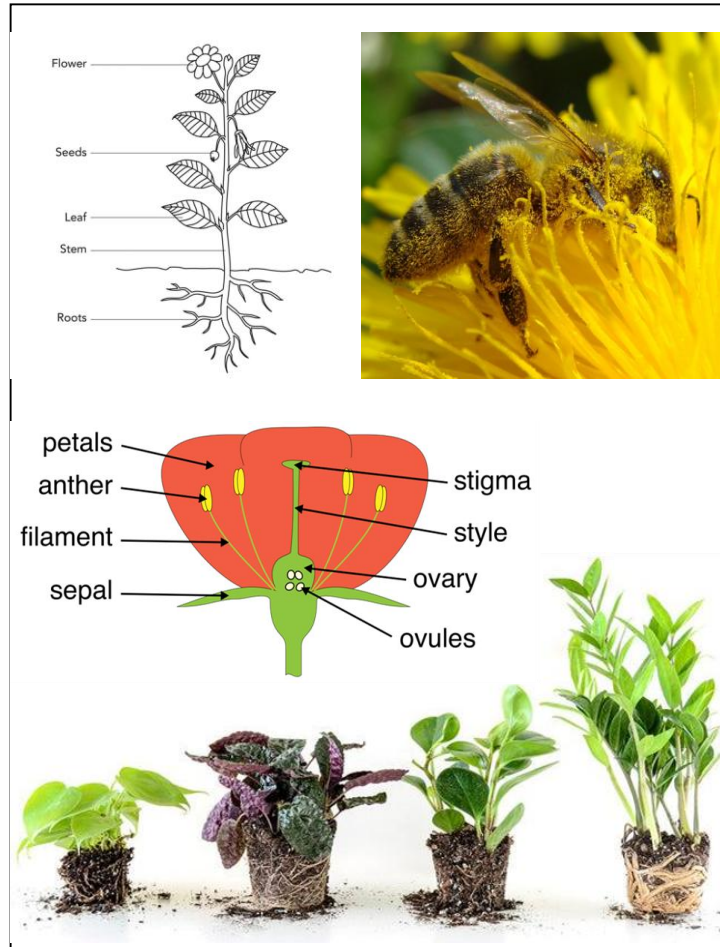
WHAT I WILL KNOW BY THE END OF THE TOPIC

- I will be able to identify the parts of a plant.
- I will be able to explain what a plant needs to survive and thrive.
- I will be able to record my findings from observing and recording plant growth.
- I will be able to explain how water enters a plant and travels to where it is needed.
- I will be able to explain the different types of dispersion of plant seeds.
- I will be able to explain the life cycle of a plant.

Scientific skills

To ask questions, to present findings and answer questions through observations, to find patterns and change over time.

DIAGRAMS



KEY VOCABULARY

Key Word	Definition
Germination	When the seed soaks up water and swells, the new plant burst the outer shell.
Seed dispersal	When seeds move away from the plant, they can be dropped by the plant or moved by an animal or the wind.
Life cycle	A process that all living things go through, see the image in the diagrams section (at the bottom) for a plants life cycle.
Petal	Thin coloured or white parts which together make a flower.
Anther	The part inside the flower that produces and contains pollen.
Stigma	Top of the centre part which takes the pollen.
Pollen	A fine powder made by plants that fertilises with flowers of the same species to produce seeds for new flowers.
Pollination	The transfer of pollen from the anther to the stigma.
Photosynthesis	The way that green plants make their food using sunlight.